

SOLA | semi transparent motorized shades

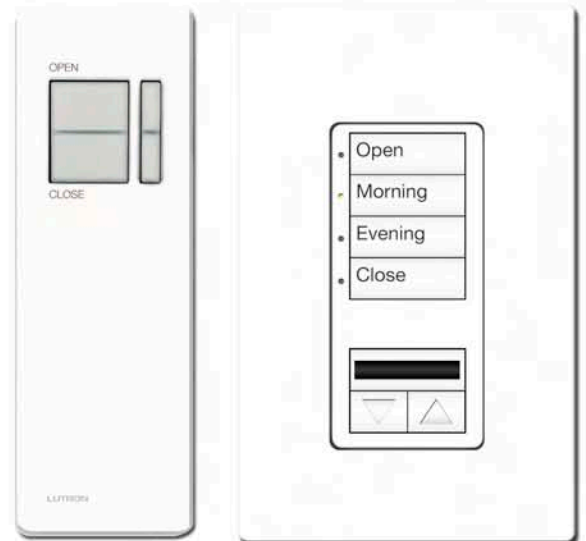


Preserve your million dollar view!

EPI's shading systems experts prefer SOLA semi transparent motorized shades versus anything else on the market. SOLA preserves your view while maintaining a diffuse, evenly filtered natural light. Let EPI create a customized "smart" shading solution just for you!

SOLA Benefits:

- Reduce room brightness
- **Optimize energy efficiency**
- Protect interiors from fading
- Ensure privacy from neighbor
- **Save money on air conditioning**
- Minimize harmful ultra violet rays
- **Reduce build up of heat inside home**
- Control glare, reduce interior reflections
- Act now for a free IR hand held remote
- Ultra quiet motor operation (44dBA @ 3 ft)
- Buy now and save money on post construction pricing
- Compatible with EPI Smart Home Touch Panel solution
- Raise and lower your shades with the touch of a button
- Designer keypad operates your shades at the touch of a button
- Control options include keypad, hand held remote, and wireless touch panel



SOLA | fabric selections

Choose from semi-transparent fabric styles



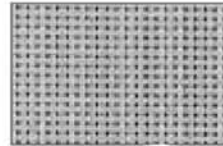
Charcoal/gray*
SXL-CG-



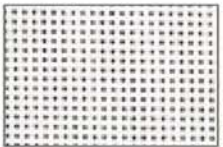
Charcoal/bronze
SXL-CB-



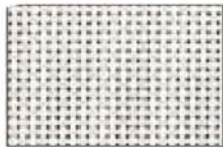
Charcoal
SXL-CC-



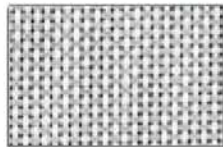
Pearl
SXL-PP-



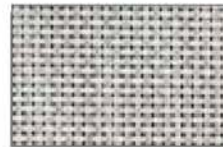
White
SXL-WW-



White/linen
SXL-WL-



White/pearl
SXL-WP-



Pearl/linen
SXL-PL-

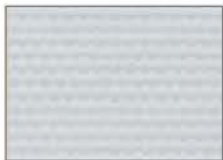


Linen
SXL-LL

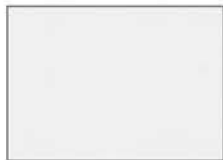
Or our pure blackout style fabric with 0 percent openness factor



Black
BN-901-0



Grey
BN-902-0



White
BN-903-0



Oyster
BN-904-0



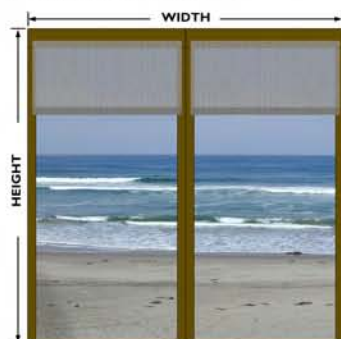
Champagne
BN-905-0

Shade and motor configurations

1 panel roller shade



2 panel roller shade



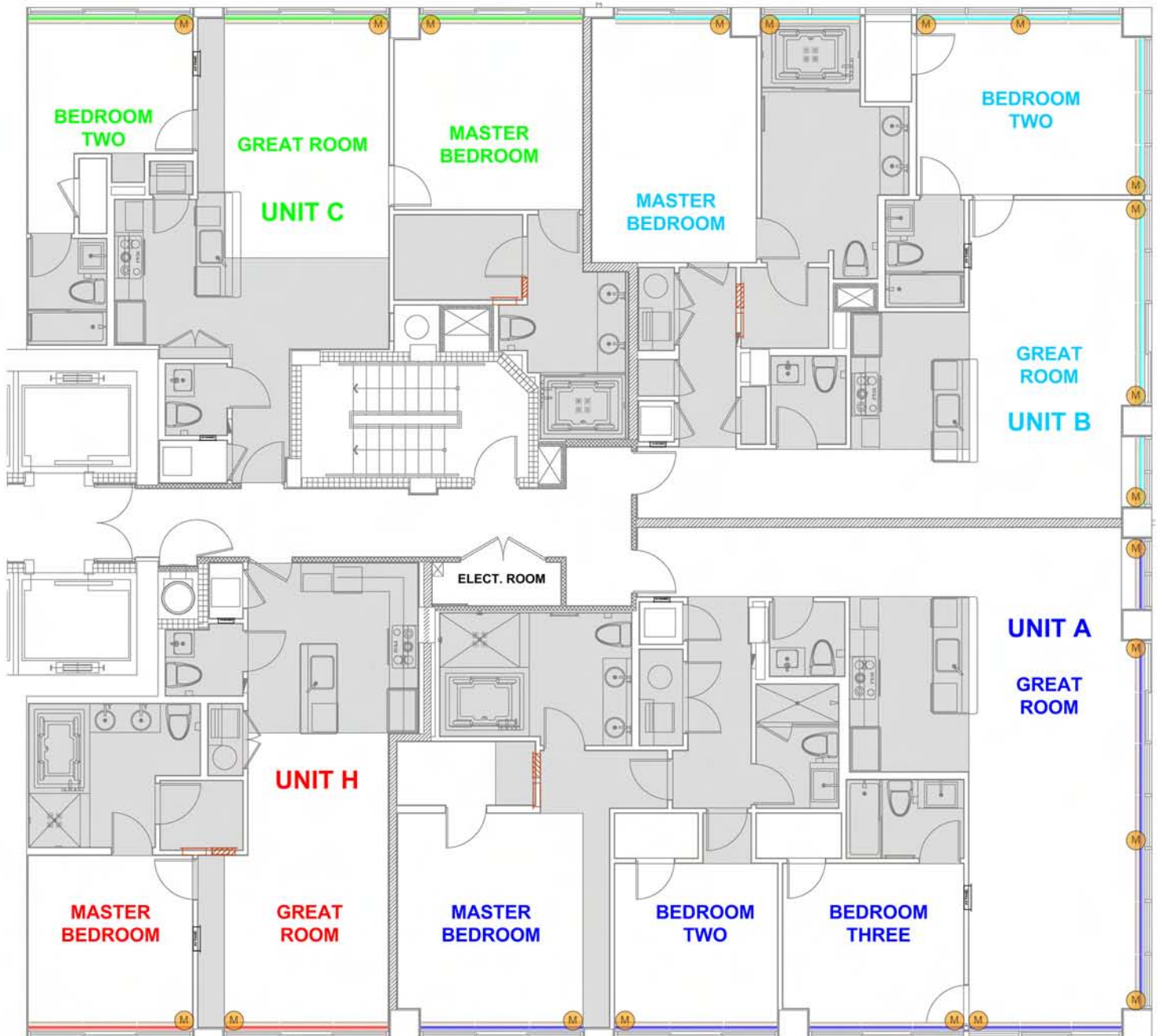
3 panel roller shade



SOLA | units and control details

Units: A,B,C,H

The drawings below use a **M** to show the placement of each shade motor within each unit to provide the SOLA shading throughout the home.

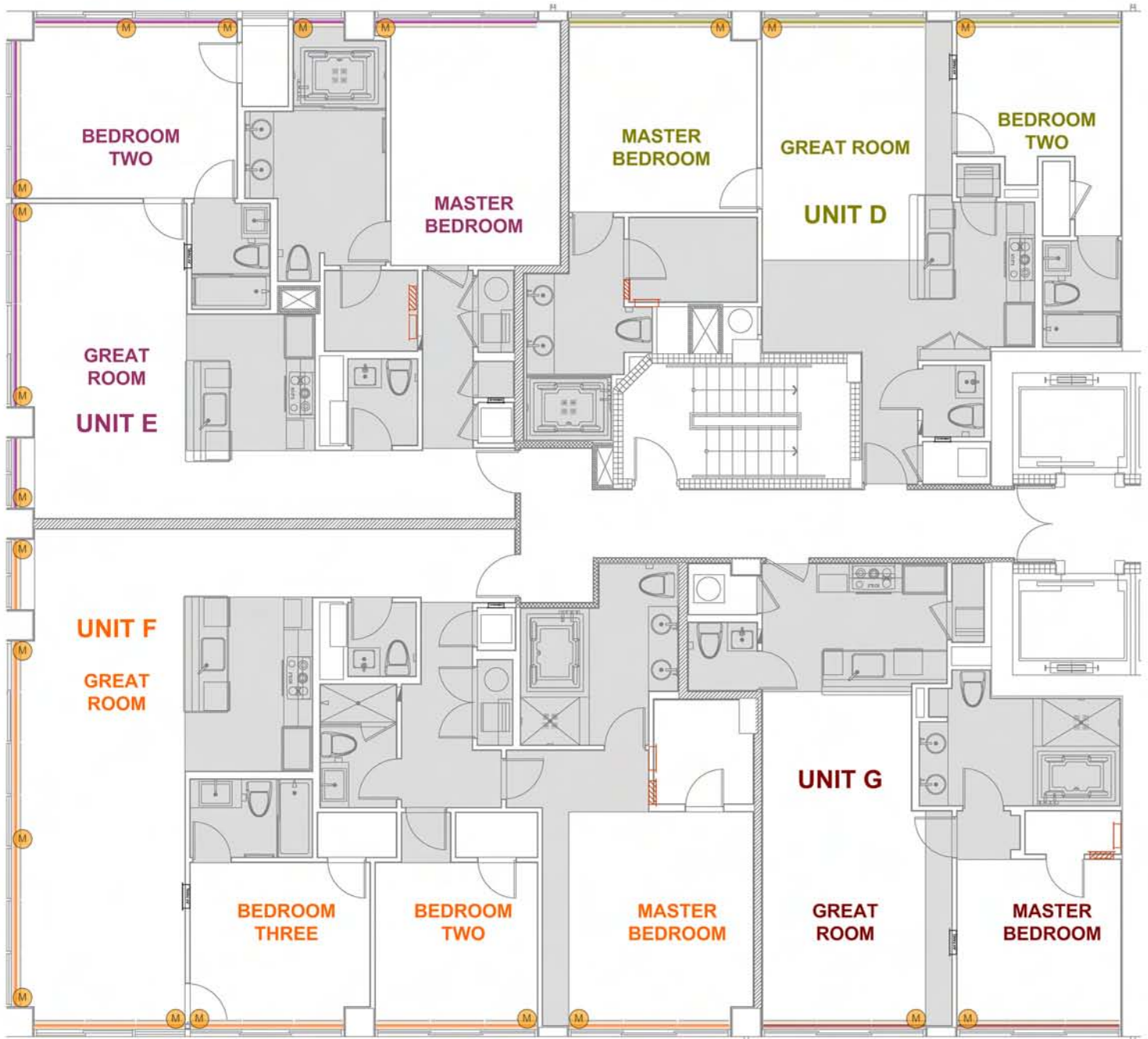


For owners of a Unit I: The 2-story Floor Plan I has the same shade motor configuration as 2 Unit G's, one on top of the other.
 For owners of a Unit J: The 2-story Floor Plan J has the same shade motor configuration as 2 Unit H's, one on top of the other.
 For owners of a Units K, L, M, and N: See page 5 SOLA System Selection.

SOLA | units and control details

Units: D,E,F,G

The drawings below use a **M** to show the placement of each shade motor within each unit to provide the SOLA shading throughout the home.



For owners of a Unit I: The 2-story Floor Plan I has the same shade motor configuration as 2 Unit G's, one on top of the other.

For owners of a Unit J: The 2-story Floor Plan J has the same shade motor configuration as 2 Unit H's, one on top of the other.

For owners of a Units K, L, M, and N: See page 5 SOLA System Selection.